



Estate Agents



Auctioneers

Stourvale Road, Southbourne, Bournemouth, Dorset, BH5 2JZ

£415,000 – Freehold

**Three Bedroom Semi Detached House | Hallway | Lounge | Dining Room | Modern Kitchen | Downstairs W/C
First Floor Landing | Modern Bathroom | 18' Master Bedroom | Two Further Bedrooms | Lovely Rear Garden**

An immaculately presented three bedroom period-style semi detached house situated in an ideal location for Southbourne's bustling high street with its array of coffee shops, bars and restaurants, and within 1 mile of the stunning sandy beaches and clifftops. The house features UPVC double glazing, re-tiled roof, gas central heating, two separate reception rooms, modern kitchen, downstairs w/c, 18' master bedroom, modern bathroom and a lovely secluded rear garden. Viewings are highly recommended.

Enter into the hallway with stairs to the first floor, understairs cupboard and ground floor w/c. To the front aspect is the cosy lounge with bay window and feature fireplace housing a wood burning stove, and there is a separate dining room - again with feature fireplace. The kitchen/breakfast room has been remodelled with an extensive range of wall and base units with contrasting work surfaces over, built-in oven and induction hob, dishwasher and washing machine.

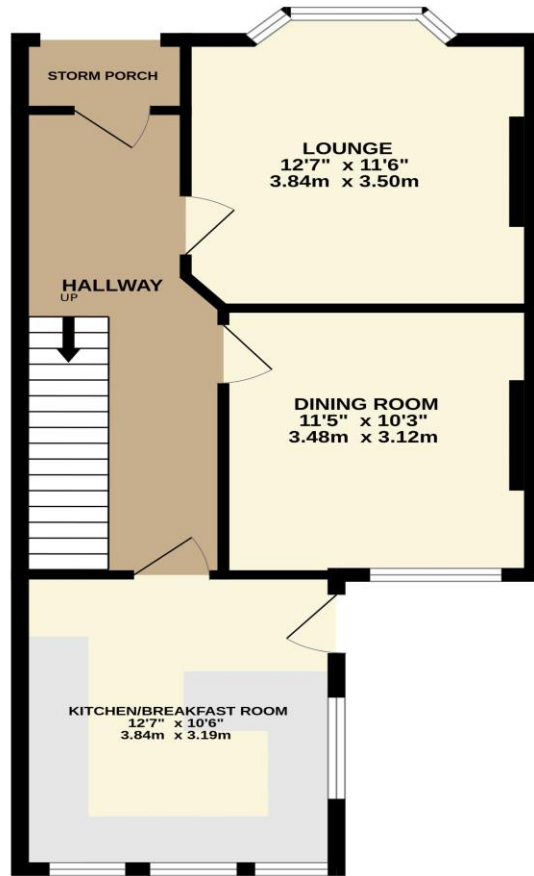
Upstairs, from the landing are three good sized bedrooms. At the front is the 18' wide master bedroom with bay window to the front aspect, a second double bedroom with feature fireplace and a third bedroom with fitted wardrobes.

Outside, the frontage is block paved. Stylish rear garden with decking areas, artificial grass, enjoying a sunny yet secluded aspect.

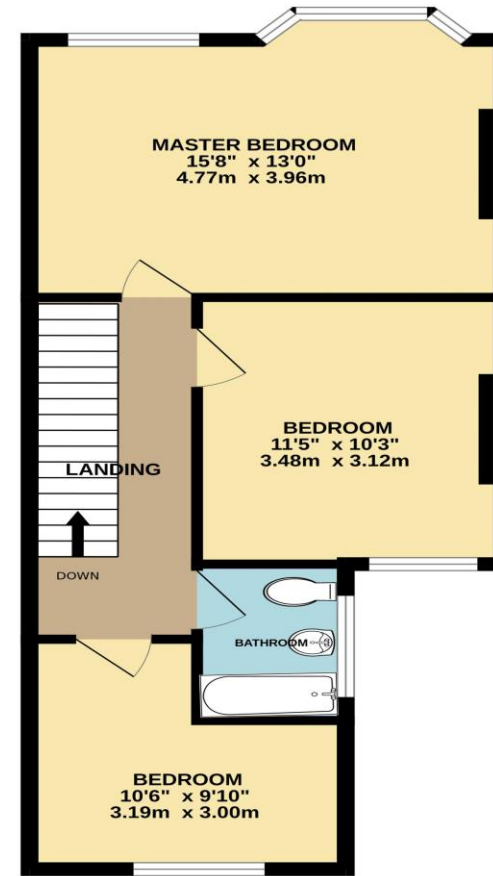




GROUND FLOOR
522 sq.ft. (48.5 sq.m.) approx.



1ST FLOOR
489 sq.ft. (45.5 sq.m.) approx.



TOTAL FLOOR AREA: 1011 sq.ft. (94.0 sq.m.) approx.

Whilst every attempt has been made to ensure the accuracy of the floorplan contained here, measurements of doors, windows, rooms and any other items are approximate and no responsibility is taken for any error, omission or mis-statement. This plan is for illustrative purposes only and should be used as such by any prospective purchaser. The services, systems and appliances shown have not been tested and no guarantee as to their operability or efficiency can be given.
Made with Metropix ©2023

Disclaimer These particulars, whilst believed to be accurate are set out as a general outline only for guidance and do not constitute any part of an offer or contract. Intending purchasers should not rely on them as statements of representation of fact, but must satisfy themselves by inspection or otherwise as to their accuracy. We have not carried out a detailed survey nor tested the services, appliances and specific fittings. Room sizes should not be relied upon for carpets and furnishings. The measurements given are approximate. No person in this firm's employment has the authority to make or give any representation or warranty in respect of the property.

Richard Godsell – Estate Agents – Auctioneers

3 Southbourne Grove • Southbourne • Bournemouth • BH6 3RE

Tel: 01202 424214 | Email: southbourne@richardgodsell.com

Offices at

Southbourne • Christchurch • London

www.richardgodsell.com

